



AECS has a vast array of equipment and tools for your workshop. We believe that every workshop should have the best equipment.

## AECS

- Equipment
- Training
- Tech Support

## FEATURES:

- Quick set up – guides you where to hook up and how to measure.
- Pre recording examples will assist in analysing measured signals.
- Measure serial and CAN bus signals in one recording.
- High accuracy, without drop outs.
- Wiring diagrams.
- 10k+ of diagnostic tutorials.

## SPECS:

- Fast 500MS/s sampling speed per channel.
- 32 million samples record buffer per channel. 300 to 10000 times more memory compared to most scopes.
- High speed signal generator.
- 14/16 bit resolutions (256 times more resolutions compared to standalone scopes).

### What's included:

- Multi-Channel (diagnostic software).
- Silicone shielded low distortion ATS oscilloscope leads.
- Full set of alligator clips, spikey & Hirschman probes.
- Solenoid driver (optional)



HEAD OFFICE:  
AECS LTD  
897 VALLEY RD  
HASTINGS RD4



HEAD OFFICE:  
06 874 9077



info@aecs.net  
www.aecs.net

fb.com/aecsltd  
AECS.NET

NORTH ISL: HAMISH - 027 706 2001

SOUTH ISL: STU - 021 506 901

# ATS 500XM

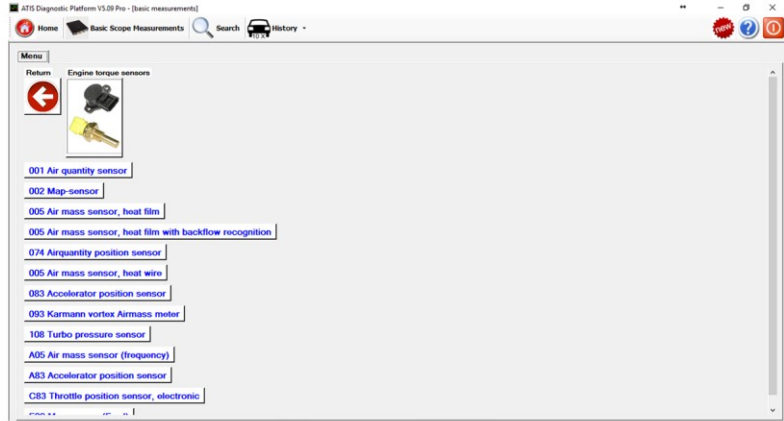
## SCOPE

with ATIS Pro & Multi-Channel  
(Diagnostic Software).

### GUIDANCE

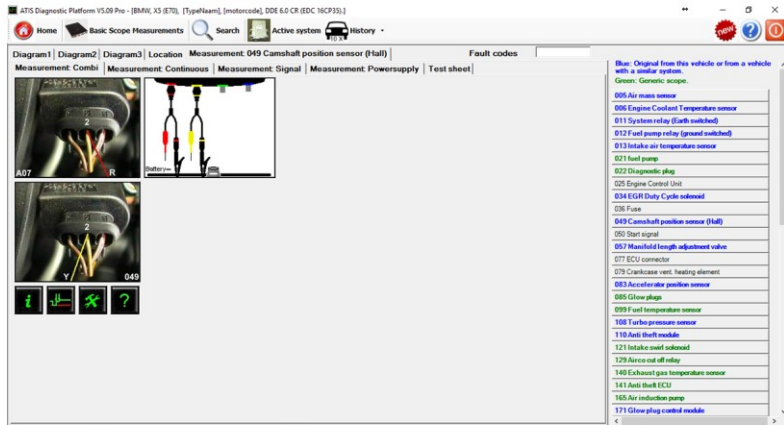
ATIS software is able to guide you to the correct scope setting for the component that you want to measure with pre-recorded vehicle specific sample patterns\* for power supply voltage, sensor patterns and actuator current. Quickly analyse vehicle's sensors and actuators with pre-recorded signals that set up the scope to measure with one click.

\*ATIS Pro only.



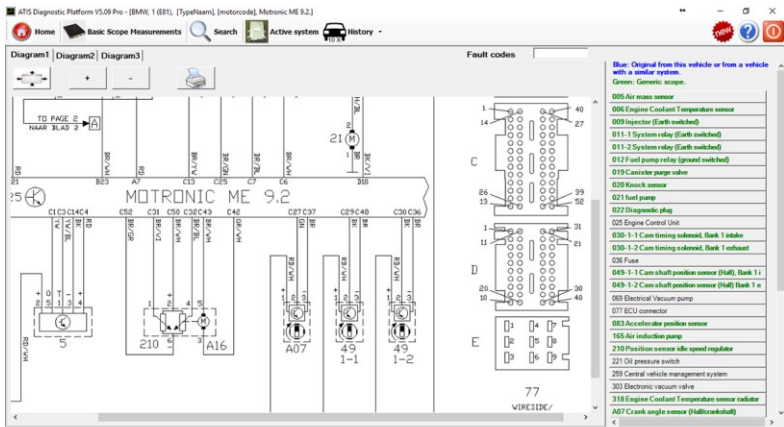
### CONNECTION

Connect to the right pin every time. ATIS software will show you where and how to connect to a sensor or actuator that you are trying to measure, with easy to follow photos and component location information.



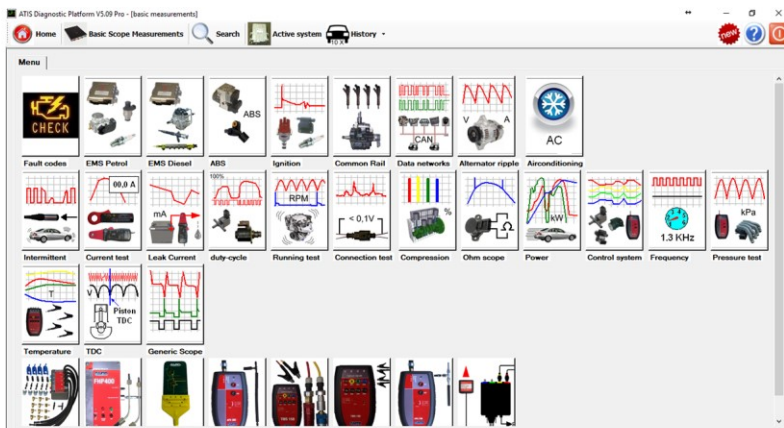
### DIAGRAMS

Ever struggled to find the correct wiring diagram for the vehicle you are working on? ATIS contains 1000's of wirings diagrams of engine management, abs, can-data and climate control systems. Excellent for complex European cars.



### OPTIONS

Configure your scope kit the way you want it. Go for a kit or add current clamps, accelerometers, return flow sensors, and many more. Each extra has its own specific diagnostic application and pre-set. On a budget, you can always add these extras at a later stage.





# ATS 500XM SCOPE

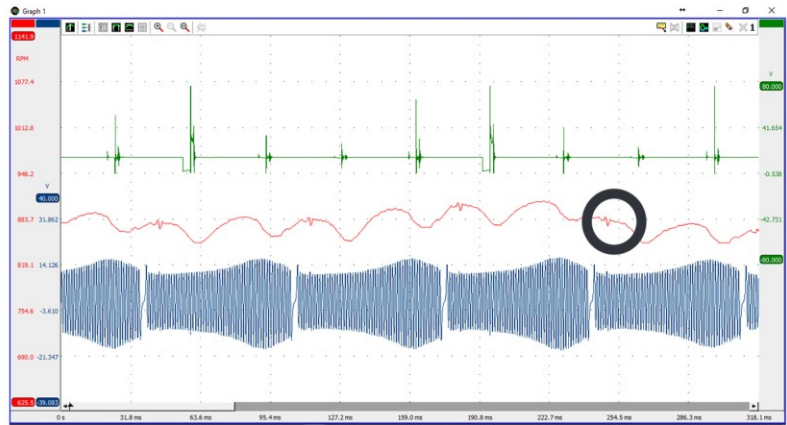
## CAPTURE EVERYTHING

The large recording buffers and high sample rates of the ATS Scope range means that you can capture the whole event from key-on, winding over, running to stalling or whatever your application may be. Accessible with easy pre-sets.



## SMART

Quickly and accurately identify which cylinder is misfiring with a calculated RPM trace from a crank angle sensor voltage. See what the ECU is trying to achieve by analysing solenoid valves, duty-cycle and many more advanced functions. Unique to ATS scopes.



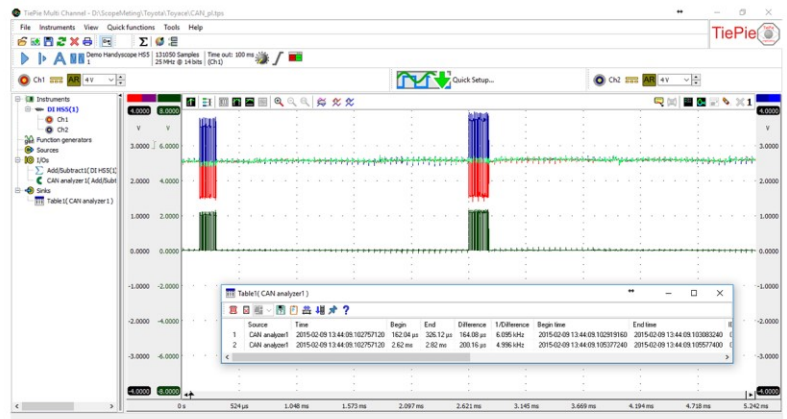
## SAMPLE PATTERNS

The Automotive Technical Information system (ATIS) software package which is compatible with any ATS Scope contains 1000's of pre-recorded patterns off vehicles that you will see in your workshop. Ever wondered if that airmass sensor is contaminated? It's easy to check and compare.



## THE ANALYST

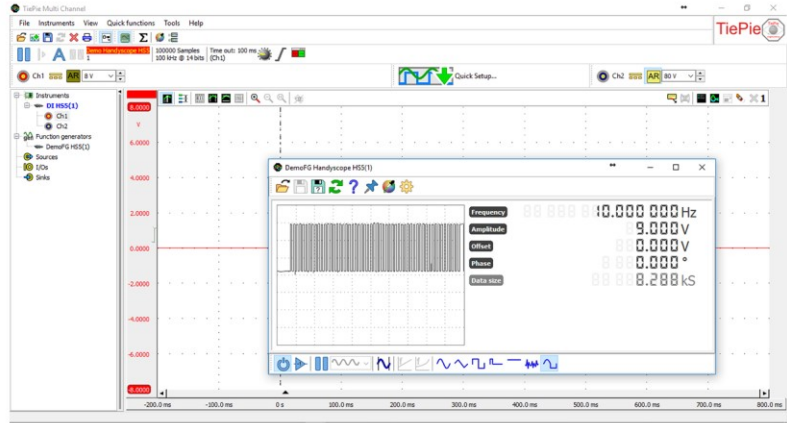
Advanced signal processing functions allow you to translate CAN databus voltages to data packets enabling you to see what an ECU is saying or find a fault in the communication circuit.



# ATS 500XM SCOPE

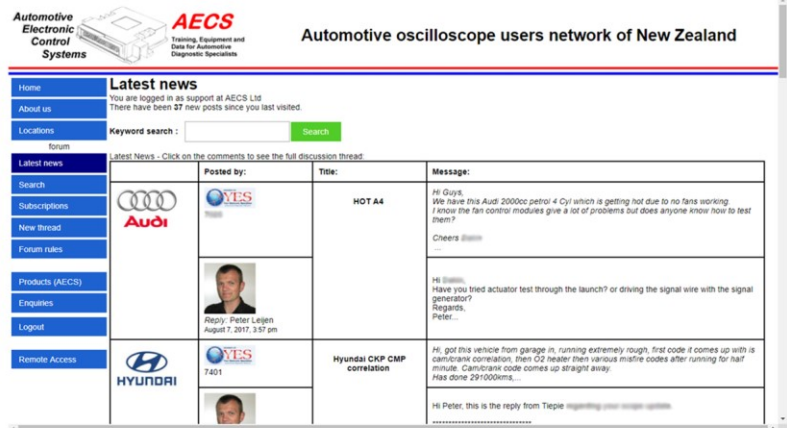
## PEACE OF MIND

The arbitrary wave form generator included in the two channel scope options allows you to generate any signal you want including sending out a pre-recorded sample pattern. How nice would it be to confirm a faulty sensor (e.g. crank angle) before replacement, or test a VVTi valve?



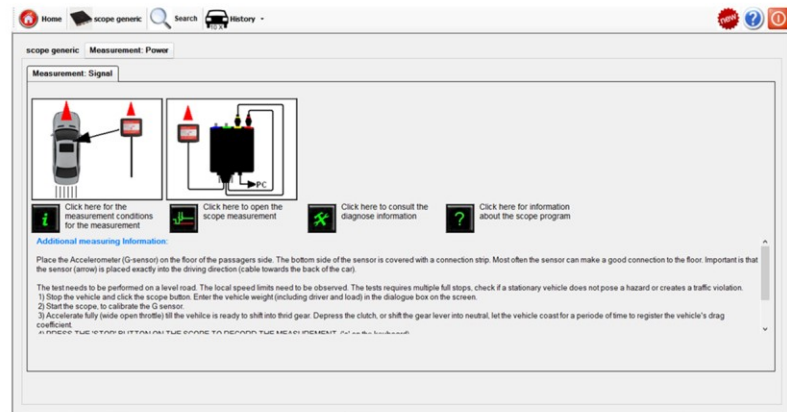
## CONNECT WITH EXPERTS

AECS Technical support forum gives you access to AECS automotive engineers, likeminded oscilloscope users from around the world, and hundreds of technical threads and thousands of recorded patterns. This is an invaluable resource for experienced diagnosticians and first-time scope users.



## EASY TO FOLLOW

For some of the finest scope accessories, you may want to read how to prepare to get the best recording results the first time. How do you get a KW reading out of the car with a simple G force sensor connected to the scope? Just follow a set of simple on-screen instructions.



## CAM CRANK PRE-SET

You will find in the ATIS database how to 'hook up' your scope, as well as an actual recording of a cam crank, in relation to a new or near new vehicle. Makes it too easy to see if you have a stretched chain or skipped belt.

