



LAUNCH

AECS
EQUIPMENT
LAUNCH - X931
TOUCHLESS WHEEL ALIGNER

LAUNCH X-931

TOUCHLESS WHEEL ALIGNER

AECS brings the latest generation of Launch laser imaging technology. Launch X931 touchless wheel aligner can quickly and accurately measure wheel alignment data without touching the vehicle tire & wheel rim. Reducing time for wheel service, increasing productivity and profitability.

FEATURES:

- Measure each parameter of the vehicle wheel: front and rear toe-in, front and rear camber, caster, kingpin inclination and thrust angle.
- Quick drive in and align.
- No target/camera damage.
- No rim damage.
- No run out compensation required.
- Accurate real time data.



LAUNCH X-931

TOUCHLESS WHEEL ALIGNER

Launch X-931 uses advanced laser image processing that measures accurate data in real time. Easy to measure tyre parameters, including, front/rear camber and toe-in, caster, kingpin inclination and thrust angle.



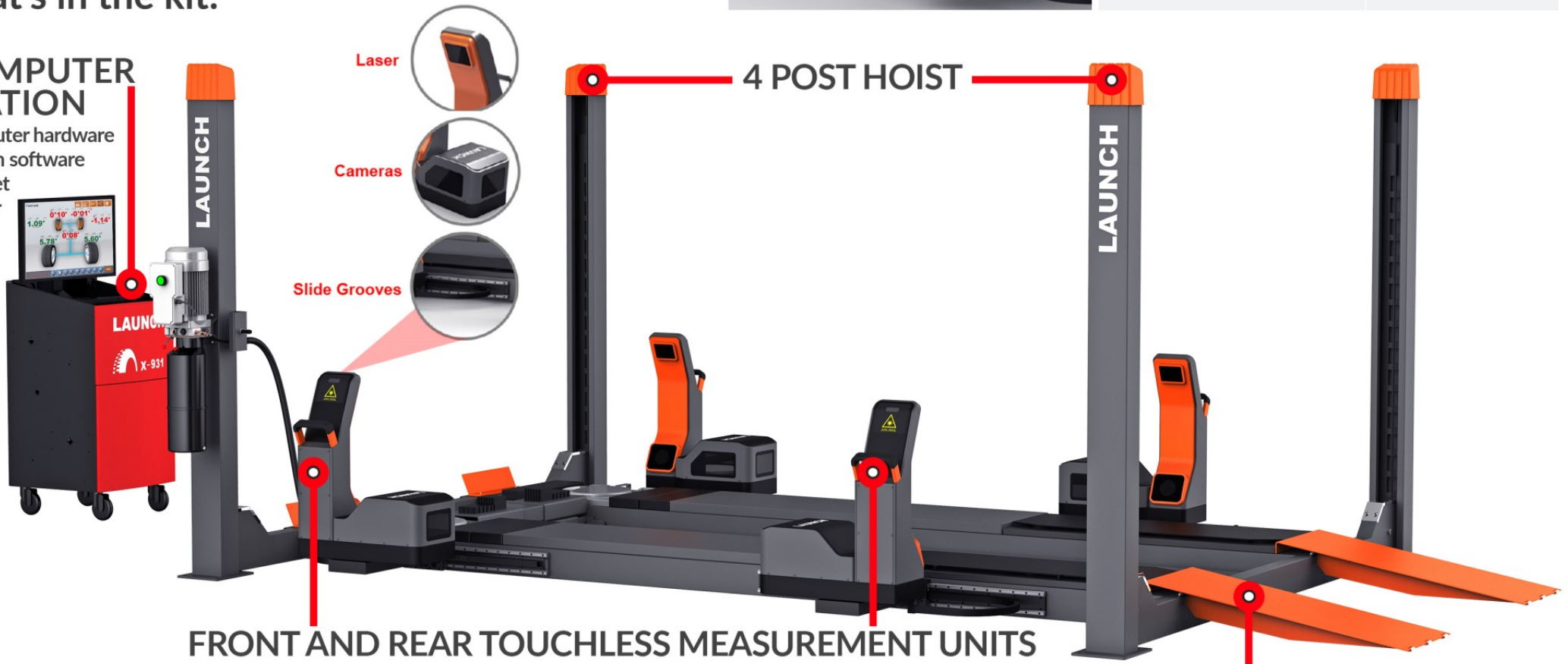
Measurement Parameters

Alignment Parameters	Measurement Range
Total Toe-in	±20 °
Individual Toe-in	±10 °
Camber	±10 °
Caster	±20 °
Kingpin inclination	±20 °
Thrust Angle	±5 °

What's in the kit:

COMPUTER STATION

- Computer hardware
- Launch software
- Cabinet
- Printer



FRONT AND REAR TOUCHLESS MEASUREMENT UNITS

1800MM-3750MM
WHEELBASE

For passenger vehicle & light commercial vehicles.

LAUNCH X-931

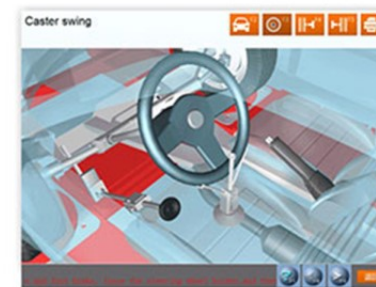
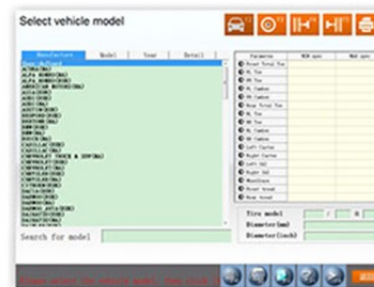
TOUCHLESS WHEEL ALIGNER

Like the Launch Scantools, Launch have continued their simple and easy to use software in the Launch X-931.

The Launch X-931 Touchless Wheel Aligner comes with a comprehensive database for calibration on most vehicles through to light commercial vehicles.

To discuss further please get in contact with AECS head office on: 06 874 9077 or info@aecs.net.

AECS 📞 06 874 9077 ✉ info@aecs.net 📍 aecs.net



Many in the automotive industry offer one-off services and products. So how does AECS stack up?

AECS FULL STACK



Equipment.

Our equipment empowers workshops throughout Australasia. AECS has a vast array of equipment and tools for your workshop. We believe that every workshop should have the best equipment.



Training.

AECS provides world class immersive training with theory and practical hands on experience to empower new and experienced technicians become proficient and productive.



Calibration & Maintenance.

AECS offers an annual brake tester, emission tester, transmission station and aircon service equipment calibration and maintenance service to your door.



Technical Articles.

AECS produces monthly technical articles that are free. Since 1999 our technical articles have been a great source for learning for many around the world. We share on many areas from correct equipment use through to difficult technical diagnostic questions and vehicle cases.



Technical Support.

AECS provides full access technical support for equipment; from our premium forum with a vast database specialising in scope and scan tool. Through to aircon service, brake service, Jaltest, and extraction. Our technical support, can assist you with problematic vehicles including: car, commercial vehicles, agriculture, marine and off highway. Our team are easily contactable, through our forum, phone and email.



HEAD OFFICE:
06 874 9077



HEAD OFFICE:
AECS LTD
897 VALLEY RD
HASTINGS RD4
NEW ZEALAND
4174



info@aecls.net
www.aecls.net

 fb.com/aeclsLtd
 AECS.NET

NORTH ISL: HAMISH - 027 706 2001
SOUTH ISL: STU - 021 506 901