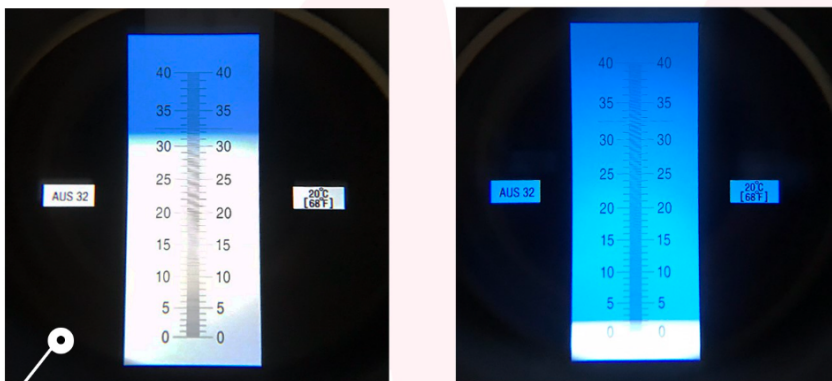


REFRACTOMETER

The Refractometer is used to measure concentrations of aqueous solutions. Simply, it is to analyse the purity of a liquid and determine the amount or concentration of dissolved substances within a sample.

So in a real-world situation, you can use this to measure the concentration such as AdBlue, if it is pure or contains substances such as moisture/ water. See some of the pictures below to see how it measures.



Looking through the viewer you can see the measured amount of concentration. In our example, we are looking at two different AdBlue concentrations as part of our R&D for our training seminar, Diesel Exhaust After Treatment (DMS1-4).



The Refractometer comes with:

- Case
- Plastic pipette
- Calibration screwdriver
- Solution

